



JP Clausen

Executive Vice President,
Global Manufacturing & Sustainability

Forward Looking Statements

This presentation and related remarks by management may include “forward-looking statements” within the meaning of the U.S. federal securities laws. Forward-looking statements are any statements other than statements of historical fact. Forward-looking statements represent our current judgment about possible future events and are often identified by words like “aim,” “anticipate,” “appears,” “approximately,” “believe,” “continue,” “could,” “designed,” “effect,” “estimate,” “evaluate,” “expect,” “forecast,” “goal,” “initiative,” “intend,” “may,” “objective,” “outlook,” “plan,” “potential,” “priorities,” “project,” “pursue,” “seek,” “should,” “target,” “when,” “will,” “would,” or the negative of any of those words or similar expressions. In making these statements, we rely on assumptions and analysis based on our experience and perception of historical trends, current conditions and expected future developments as well as other factors we consider appropriate under the circumstances. We believe these judgments are reasonable, but these statements are not guarantees of any future events or financial results, and our actual results may differ materially due to a variety of important factors, many of which are beyond our control. These factors, which may be revised or supplemented in subsequent reports we file with the U.S. Securities and Exchange Commission (“SEC”), include, among others, the following: (1) our ability to deliver new products, services, technologies and customer experiences in response to increased competition and changing consumer needs and preferences; (2) our ability to timely fund and introduce new and improved vehicle models, including EVs, that are able to attract a sufficient number of consumers; (3) our ability to profitably deliver a strategic portfolio of EVs that will help drive consumer adoption; (4) the success of our current line of ICE vehicles, particularly our full-size SUVs and full-size pickup trucks; (5) our highly competitive industry, which has been historically characterized by excess manufacturing capacity and the use of incentives, and the introduction of new and improved vehicle models by our competitors; (6) the unique technological, operational, regulatory and competitive risks related to the timing and commercialization of AVs, including the various regulatory approvals and permits required for operating driverless AVs in multiple markets; (7) risks associated with climate change, including increased regulation of GHG emissions, our transition to EVs and the potential increased impacts of severe weather events; (8) global automobile market sales volume, which can be volatile; (9) inflationary pressures and persistently high prices and uncertain availability of raw materials and commodities used by us and our suppliers, and instability in logistics and related costs; (10) our business in China, which is subject to unique operational, competitive, regulatory and economic risks; (11) the success of our ongoing strategic business relationships, particularly with respect to facilitating access to raw materials necessary for the production of EVs, and of our joint ventures, which we cannot operate solely for our benefit and over which we may have limited control; (12) the international scale and footprint of our operations, which exposes us to a variety of unique political, economic, competitive and regulatory risks, including the risk of changes in government leadership and laws (including labor, trade, tax and other laws), political uncertainty or instability and economic tensions between governments and changes in international trade policies, new barriers to entry and changes to or withdrawals from free trade agreements, changes in foreign exchange rates and interest rates, economic downturns in the countries in which we operate, differing local product preferences and product requirements, changes to and compliance with U.S. and foreign countries’ export controls and economic sanctions, differing labor regulations, requirements and union relationships, differing dealer and franchise regulations and relationships, difficulties in obtaining financing in foreign countries, and public health crises, including the occurrence of a contagious disease or illness; (13) any significant disruption, including any work stoppages, at any of our manufacturing facilities; (14) the ability of our suppliers to deliver parts, systems and components without disruption and at such times to allow us to meet production schedules; (15) pandemics, epidemics, disease outbreaks and other public health crises; (16) the possibility that competitors may independently develop products and services similar to ours, or that our intellectual property rights are not sufficient to prevent competitors from developing or selling those products or services; (17) our ability to manage risks related to security breaches, cyberattacks and other disruptions to our information technology systems and networked products, including connected vehicles and in-vehicle systems; (18) our ability to comply with increasingly complex, restrictive and punitive regulations relating to our enterprise data practices, including the collection, use, sharing and security of the personal information of our customers, employees or suppliers; (19) our ability to comply with extensive laws, regulations and policies applicable to our operations and products, including those relating to fuel economy, emissions and AVs; (20) costs and risks associated with litigation and government investigations; (21) the costs and effect on our reputation of product safety recalls and alleged defects in products and services; (22) any additional tax expense or exposure or failure to fully realize available tax incentives; (23) our continued ability to develop captive financing capability through GM Financial; and (24) any significant increase in our pension funding requirements. We caution readers not to place undue reliance on forward-looking statements. Forward-looking statements speak only as of the date they are made, and we undertake no obligation to update publicly or otherwise revise any forward-looking statements, whether as a result of new information, future events, or other factors that affect the subject of these statements, except where we are expressly required to do so by law.

Product Disclosure

Depicted vehicles and features shown throughout may be simulated or in a preproduction state and subject to change. Products may not be currently available and subject to limited availability. Certain vehicle performance and other specs, including acceleration, torque and range are based on GM testing. EPA estimates are not currently available for all products shown. Actual vehicle range will vary based on several factors, including temperature, terrain, battery age, loading, use and maintenance. For important feature information and details relating to advanced safety and driver assistance features, including use and limitations, consult the vehicle's Owner's Manual and brand's website. These materials are intended for informational purposes only and not intended for further distribution. Manufacturer's Suggested Retail Price excludes tax, title, license, dealer fees, and optional equipment. Dealer sets final price.

Non-GAAP Financial Measures

See our 2023 Form 10-K and our subsequent filings with the SEC for a description of certain non-GAAP measures referenced in this presentation and remarks made by management, including EBIT-adjusted, EPS-diluted-adjusted, ROIC-adjusted and adjusted automotive free cash flow, along with a description of various uses for such measures. Our calculation of these non-GAAP measures are set forth within these reports and may not be comparable to similarly titled measures of other companies due to potential differences between companies in the method of calculation. As a result, the use of these non-GAAP measures has limitations and should not be considered superior to, in isolation from, or as a substitute for, related U.S. GAAP measures. When we present our total company EBIT-adjusted, GM Financial is presented on an EBT-adjusted basis.

GM'S COMMITMENT TO A ZERO EMISSIONS FUTURE



CAPABILITIES AND
POTENTIAL TO DELIVER
EVEN MORE

FACTORY ZERO, MI



Ultium Cells Joint Venture

ULTIUM CELLS OHIO

ULTIUM CELLS SPRING HILL



SPRING HILL, TN

North American EV Ecosystem

2

Ultium Cells
plants

6

EV propulsion &
components plants

4

EV assembly
plants

+2

additional EV assembly
plants by 2026

A white car body is shown on an assembly line, surrounded by orange robotic arms. The car body is the central focus, with the text '10 new EV launches' overlaid on it. The background shows the industrial setting of a factory.

10

new EV launches

RAMOS ARIZPE, MEXICO

A black SUV is shown in profile on an assembly line in a factory. The car is positioned on a platform with orange markings on the floor. In the background, there are other vehicles, including a silver car on the left and a grey car on the right. The factory environment is filled with industrial equipment, including overhead beams with "KNIGHT GLOBAL" labels and weight specifications (750 LB. / 341 KG. and 650 LB. / 294 KG.), and a staircase with yellow railings. A sign with "R 2 2" is visible in the background. The overall scene is brightly lit with industrial lighting.

MANUFACTURING FOUNDATION CREATES HIGH-QUALITY VEHICLES

SPRING HILL, TN

Productivity up

10%

over the past
two years



Flexible Assembly Lines

Retooling saves

\$1B

per facility in materials compared to a greenfield facility

Reduce

material, energy and water consumption, minimize waste, improve overall efficiency

Upskill

our existing workforce


Convert

capacity with retooled facilities

A dark blue Cadillac SUV is positioned on a factory assembly line. The car is centered in the frame, facing forward. The factory floor is marked with yellow safety lines. The background shows industrial equipment, overhead lights, and a complex network of pipes and structural beams. A digital display board in the background shows various production metrics. The overall scene is brightly lit, emphasizing the clean and organized environment of the manufacturing plant.

WINNING WITH
SIMPLICITY

SPRING HILL, TN



Eliminating
2,700
parts equals
significant saving

SPRING HILL, TN




**Increase Floor Space,
Reduce Storage Needs,
Streamline Training
and Quality Control**

SPRING HILL, TN

A photograph of a car assembly line. In the foreground, a yellow robotic arm is positioned over a car body. The car is dark-colored and has a white interior. The background shows other cars on the assembly line and more robotic arms. The text "Mitigate Supply Chain Risk" is overlaid on the left side of the image.

Mitigate Supply Chain Risk

SPRING HILL, TN



**Enhancing Quality
and Productivity
While Reducing
Complexity and Cost**

SPRING HILL, TN

A close-up, profile view of a man with a full beard and safety glasses, wearing a blue earpiece, working on a silver car chassis in a factory setting. The background is blurred, showing industrial equipment and lights.

TALENTED WORKFORCE

99%

current
build-to-plan rate

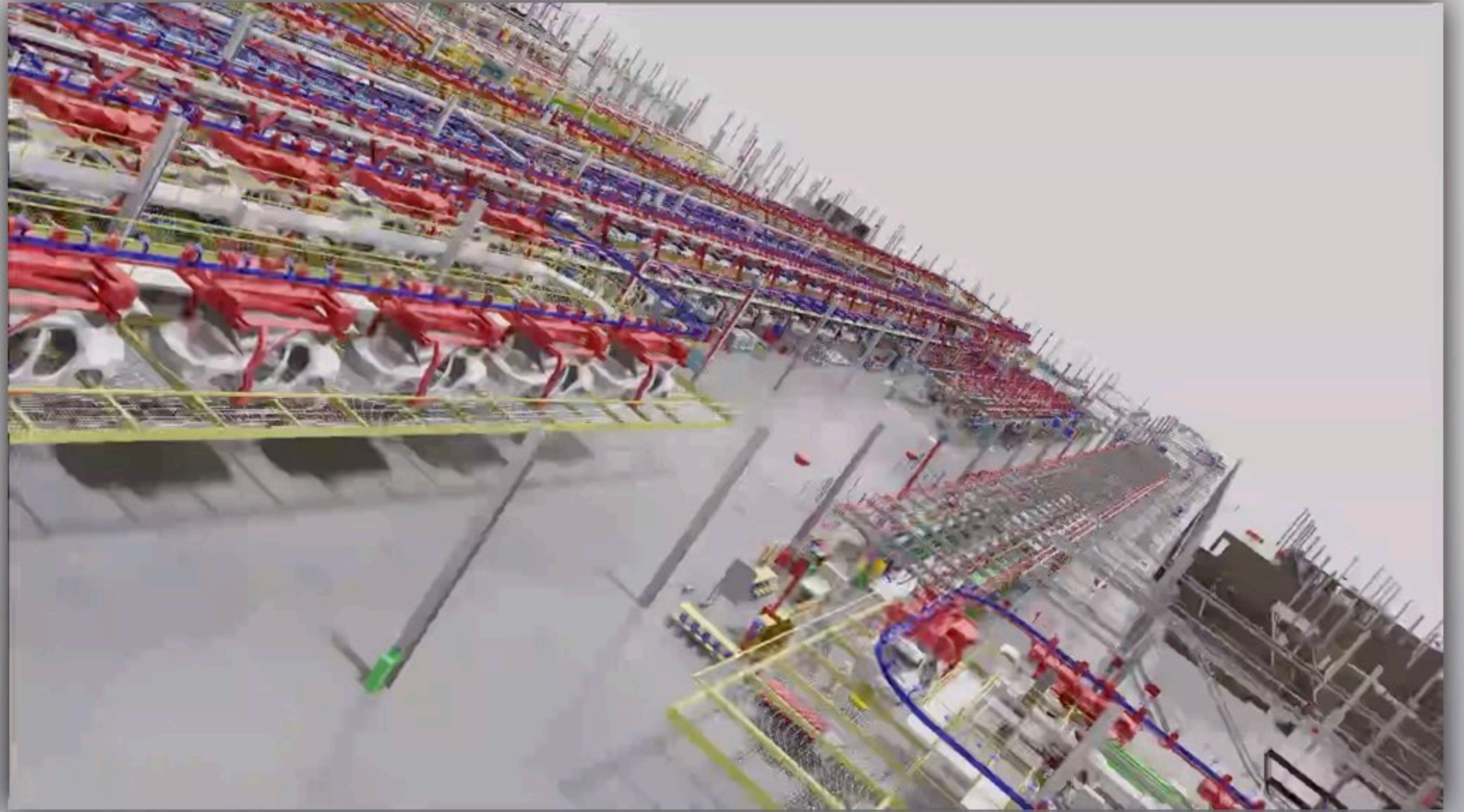
SPRING HILL, TN

**The Power of
Technology**

**Software Expertise
In-House**

**Competitive
Advantage**

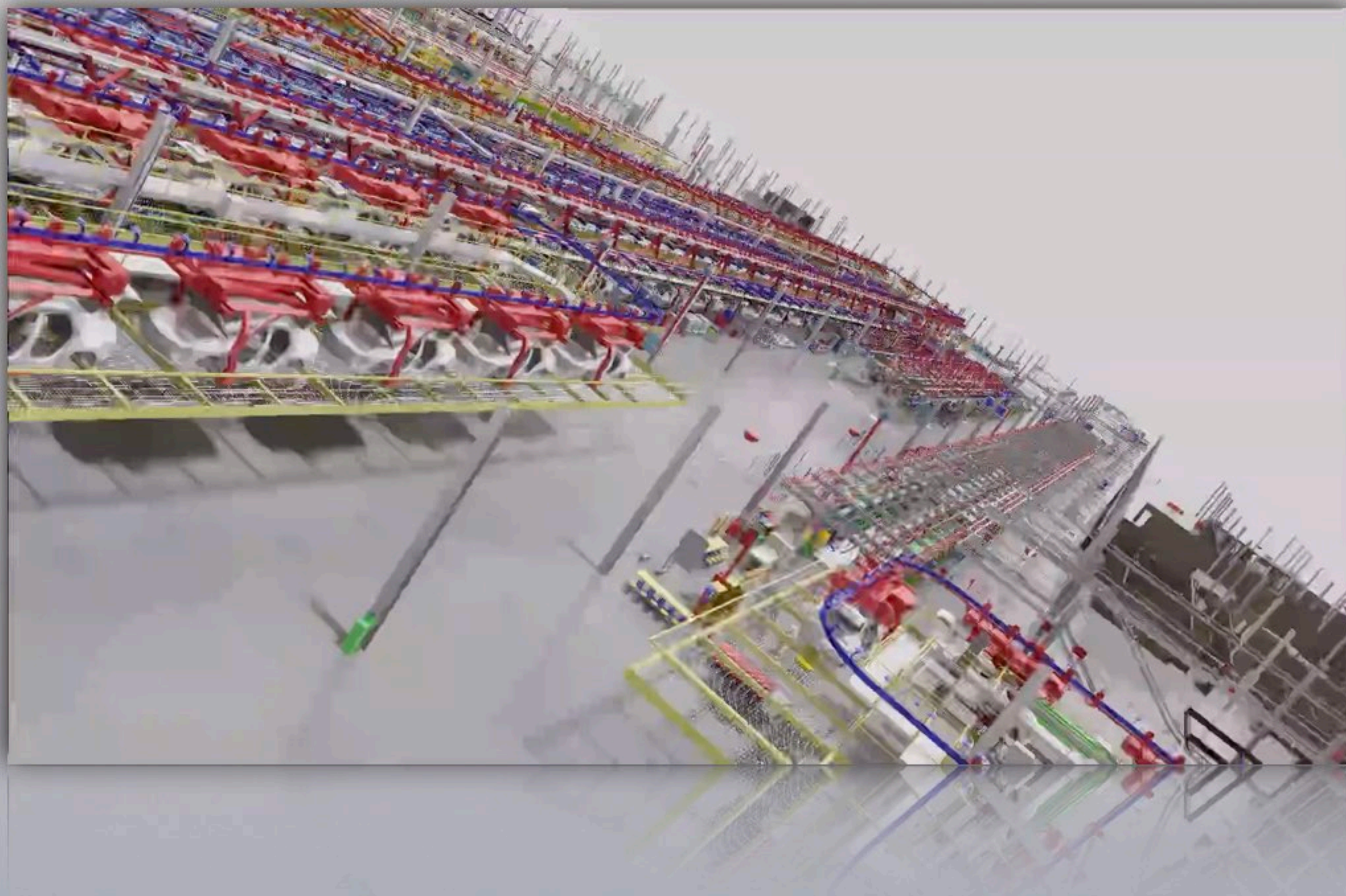
Technology Game Changers



Body shop digital
twin saves

30%

of project
installation time



Technology Enhancing Quality and Ergonomics



AI Makes GM Manufacturing More Competitive



AI Makes GM Manufacturing More Competitive





THE FUTURE OF MANUFACTURING

